



## Thaw and Culture Details

Cell Line Name	<b>UCSD003i-16-2</b>
WiCell Lot Number	<b>WB53533</b>
Provider	University of California, San Diego – Dr. Kelly Frazer
Banked By	WiCell
Thaw and Culture Recommendations	WiCell recommends thawing 1 vial into 4 wells of a 6 well plate.
Culture Platform	Feeder Independent
	Medium: mTeSR™1
	Matrix: Matrigel®
Protocol	WiCell Feeder Independent mTeSR™1 Protocol
Passage Number	p23 These cells were cultured for 22 passages prior to freeze and post reprogramming. WiCell adds +1 to the passage number to best represent the overall passage number of the cells at thaw.
Date Vialied	03-December-2016
Vial Label	UCSD003i-16-2 p23 WB53533
Biosafety and Use Information	Appropriate biosafety precautions should be followed when working with these cells. The end user is responsible for ensuring that the cells are handled and stored in an appropriate manner. WiCell is not responsible for damages or injuries that may result from the use of these cells. Cells distributed by WiCell are intended for research purposes only and are not intended for use in humans.

## Testing Performed by WiCell

Test Description	Test Provider	Test Method	Test Specification	Result
Karyotype by G-banding	WiCell	SOP-CH-003	Expected karyotype	See Report
Post-Thaw Viable Cell Recovery	WiCell	SOP-CH-305	≥ 15 Undifferentiated Colonies, ≤ 30% Differentiation and recoverable attachment after passage	Pass
Identity by STR	UW Translational Research Initiatives in Pathology Laboratory	PowerPlex 16 HS System by Promega	Defines profile	Pass
Sterility	Steris	ST/07	Negative	Pass
Mycoplasma	WiCell	SOP-QU-004	Negative	Pass

## Testing Reported by Provider

The Provider stated that some or all of the additional analyses listed below may have been performed for this cell line. For more information, publication and dbGaP links, where available, are provided on the cell line specific web page on the WiCell website.

- Illumina® HumanCoreExome BeadChip Array
- RNA-Seq
- Flow Cytometry (SSEA-4, Tra 1-81)
- Infinium® Expanded Multi-Ethnic Genotyping Array (MEGA<sup>EX</sup>)



Approval Date	Quality Assurance Approval
20-December-2016	<p style="text-align: right;">9/6/2018</p> <p>X JKG JKG Quality Assurance Signed by Gay, Jenna</p>

**Date Reported:** Wednesday, April 18, 2018

**Cell Line:** UCSD003i-16-2-WB53533 13560

**Passage#:** 23

**Date of Sample:** 4/10/2018

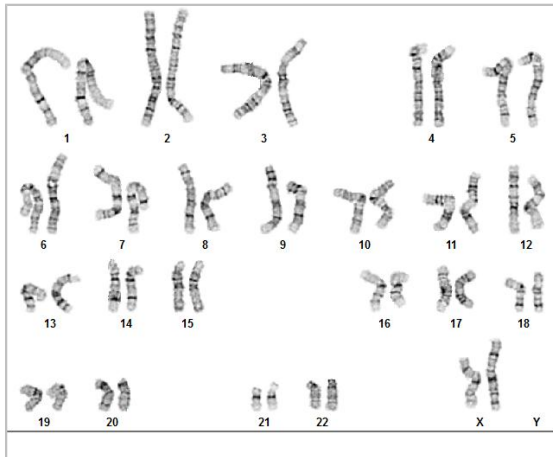
**Specimen:** Human IPS

**Results:** 46,XX

**Cell Line Gender:** Female

**Reason for Testing:** Lot release testing

**Investigator:** [REDACTED], WiCell



**Cell:** 3

**Slide:** G01

**Slide Type:** Karyotype

**Total Counted:** 20

**Total Analyzed:** 8

**Total Karyogrammed:** 4

**Band Resolution:** 450 - 575

### Interpretation:

**This is a normal karyotype. No clonal abnormalities were detected at the stated band level of resolution.**

**Completed by:** [REDACTED], CG(ASCP)

**Reviewed and Interpreted by:** [REDACTED], PhD, FACMG

**A signed copy of this report is available upon request.**

**Date:** \_\_\_\_\_ **Sent By:** \_\_\_\_\_ **Sent To:** \_\_\_\_\_ **QC Review By:** \_\_\_\_\_

*Limitations: This assay allows for microscopic visualization of numerical and structural chromosome abnormalities. The size of structural abnormality that can be detected is >3-10Mb, dependent upon the G-band resolution obtained from this specimen. For the purposes of this report, band level is defined as the number of G-bands per haploid genome. It is documented here as "band level", i.e., the range of bands determined from the four karyograms in this assay. Detection of heterogeneity of clonal cell populations in this specimen (i.e., mosaicism) is limited by the number of metaphase cells examined, documented here as "# of cells counted".*

*This assay was conducted solely for listed investigator/institution. The results may not be relied upon by any other party without the prior written consent of the Director of the WiCell Cytogenetics Laboratory. The results of this assay are for research use only. If the results of this assay are to be used for any other purpose, contact the Director of the WiCell Cytogenetics Laboratory.*

*Unless otherwise mutually agreed in writing, the services provided to you hereunder by WiCell Research Institute, Inc. ("WiCell") are governed solely by WiCell's Terms and Conditions of Service, found at [www.wicell.org/privacyandterms](http://www.wicell.org/privacyandterms). Any terms you may attach to a purchase order or other document that are inconsistent, add to, or conflict with WiCell's Terms and Conditions of Service are null and void and of no legal force or effect.*

**Sample Report:**

13560-STR

**Sample Name on Tube:** 13560-STR

67.4 ng/μL, (A260/280=1.81)

**Sample Type:** Cells

**Cell Count:** ~2 million cells

**Requestor:**

WiCell Research Institute

Quality Department

**Sample Date:** N/A

**Receive Date:** 04/16/18

**Assay Date:** 04/19/18

**File Name:** STR 180420 wmr

**Report Date:** 04/27/18

STR Locus	STR Genotype Repeat #	STR Genotype
FGA	16-18,18.2,19,19.2,20,20.2,21,21.2,22, 22.2, 23, 23.2, 24, 24.2, 25, 25.2, 26-30, 31.2, 43.2, 44.2,45.2, 46.2	Identifying information has been redacted to protect donor confidentiality. If more information is required, please, contact <a href="#">WiCell's Technical Support</a> .
TPOX	6-13	
D8S1179	7-18	
vWA	10-22	
Amelogenin	X,Y	
Penta_D	2.2, 3.2, 5, 7-17	
CSF1PO	6-15	
D16S539	5, 8-15	
D7S820	6-14	
D13S317	7-15	
D5S818	7-16	
Penta_E	5-24	
D18S51	8-10, 10.2, 11-13, 13.2, 14-27	
D21S11	24,24.2,25,25.2,26-28,28.2,29,29.2, 30, 30.2,31, 31.2,32,32.2,33,33.2, 34,34.2,35,35.2,36-38	
TH01	4-9,9.3,10-11,13.3	
D3S1358	12-20	

**Results:** Based on the 13560-STR cells submitted by WiCell QA dated and received on 04/16/18, this sample (Label on Tube: 13560-STR) defines the STR profile of the human stem cell line UCSD003i-16-2 comprising 26 allelic polymorphisms across the 15 STR loci analyzed.

**Interpretation:** No STR polymorphisms other than those corresponding to the human UCSD003i-16-2 stem cell line were detected and the concentration of DNA required to achieve an acceptable STR genotype (signal/noise) was equivalent to that required for the standard procedure (~1 ng/amplification reaction) from human genomic DNA. This result suggests that the 13560-STR sample submitted corresponds to the UCSD003i-16-2 stem cell line and was not contaminated with any other human stem cells or a significant amount of mouse feeder layer cells.

**Sensitivity:** Sensitivity limits for detection of STR polymorphisms unique to either this or other human stem cell lines is ~2-5%.

**X<sub>RMB</sub>** Digitally Signed on 04/30/18

BA  
TRIP Laboratory, Molecular

**X<sub>WMR</sub>** Digitally Signed on 04/30/18

, PhD, Director / Co-Director  
UWHC Molecular Diagnostics Laboratory / UWSMPH TRIP Laboratory

Testing was accomplished by analysis of human genetic polymorphisms at STR loci. This methodology has not yet been approved by the FDA and is for investigational use only.

Acknowledge TRIP in your publications, posters & presentations. For details, see: <http://www.pathology.wisc.edu/research/trip/acknowledging>

TRIP agrees to maintain the confidentiality of any information provided to it in connection with its performance of this STR analysis on the same conditions as set forth in paragraph 2 of WiCell's Terms and Conditions of Service (<http://www.wicell.org/media.acux/1a429b84-2b54-44a4-8ad8-5c05db93dd8a>).

# Sterility Report

Biotest Laboratories, Inc.

Making life-saving products possible

**CORRECTED  
REPORT**

WiCell Research Institute, Inc.  
WiCell Quality Assurance  
504 South Rosa Road, Room 101  
Madison, WI 53719

BIOTEST SAMPLE # 16120579

VALIDATION # NG

TEST PURPOSE NG

PRODUCT UCSD135i-81-1 WB52272 12052  
UCSD194i-29-1-WB52612 12053  
UCSD077i-1-8 WB52432 12054  
UCSD116i-71-1-WB52431 12055  
UCSD222i-120-1-WB52614 12056  
UCSD070i-1-1-WB52613 12057  
UCSD003i-16-2-WB53533 12058  
UCSD221i-119-1-WB53573 12059  
UCSD192i-13-2-WB53109 12060  
UCSD231i-SAD1-3-DB26804 12062

PRODUCT LOT NA

STERILE LOT NA

STERILIZATION LOT NA

STERILIZATION DATE NA

STERILIZATION METHOD NA

SAMPLING BLDG / ROOM NA

BI LOT NA

BI EXPIRATION DATE NA

DATE RECEIVED 2016-12-08

TEST INITIATED 2016-12-09

TEST COMPLETED 2016-12-23

REFERENCE Processed according to LAB-003: Sterility Test Procedure

Ten (10) products were each divided between 40 mL TSB and 40 mL FTG. The samples were then cultured at 20-25 C and 30-35 C respectively and were monitored for a minimum of 14 days.

- USP
- BI Manufacturers Specifications
- Other

RESULTS	# POSITIVES	# TESTED	POSITIVE CONTROL	NEGATIVE CONTROL
Sterile	0	10	NA	2 Negative


Specific test results may not be indicative of the characteristics of any other samples from the same lot or similar lots. Liability is limited to the costs of the tests. The uncertainty of measurement associated with the measurement result reported in this certificate is available from the organization upon request.

Biotest Laboratories ■ 9303 West Broadway Ave. ■ Brooklyn Park, MN 55445 ■ USA ■ (763) 315-1200

**CORRECTED  
REPORT**

BIOTEST SAMPLE # 16120579

COMMENTS Report revised due to missing product name.

REVIEWED BY 

DATE 30 Dec 10

Specific test results may not be indicative of the characteristics of any other samples from the same lot or similar lots. Liability is limited to the costs of the tests.



# Mycoplasma Detection Assay Report

Testing Performed by WiCell

Lot Release Testing

April 09, 2018

FORM SOP-QU-004.01

Version G Edition 02

Reported by: AP

Reviewed by: DF

BD Monolight 180

#	Sample Name	Reading A		A Ave	Reading B		B Ave	Ratio B/A	Result	Comments/Suggestions
		RLU1	RLU2		RLU1	RLU2				
1	UCSD003i-16-2-WB53533 13560	303	309	306	108	108	108	0.35	Negative	
2	Positive (+) Control	602	603	602.5	26317	26406	26362	43.75	Positive	
3	Negative (-) Control	873	884	878.5	93	93	93	0.11	Negative	

